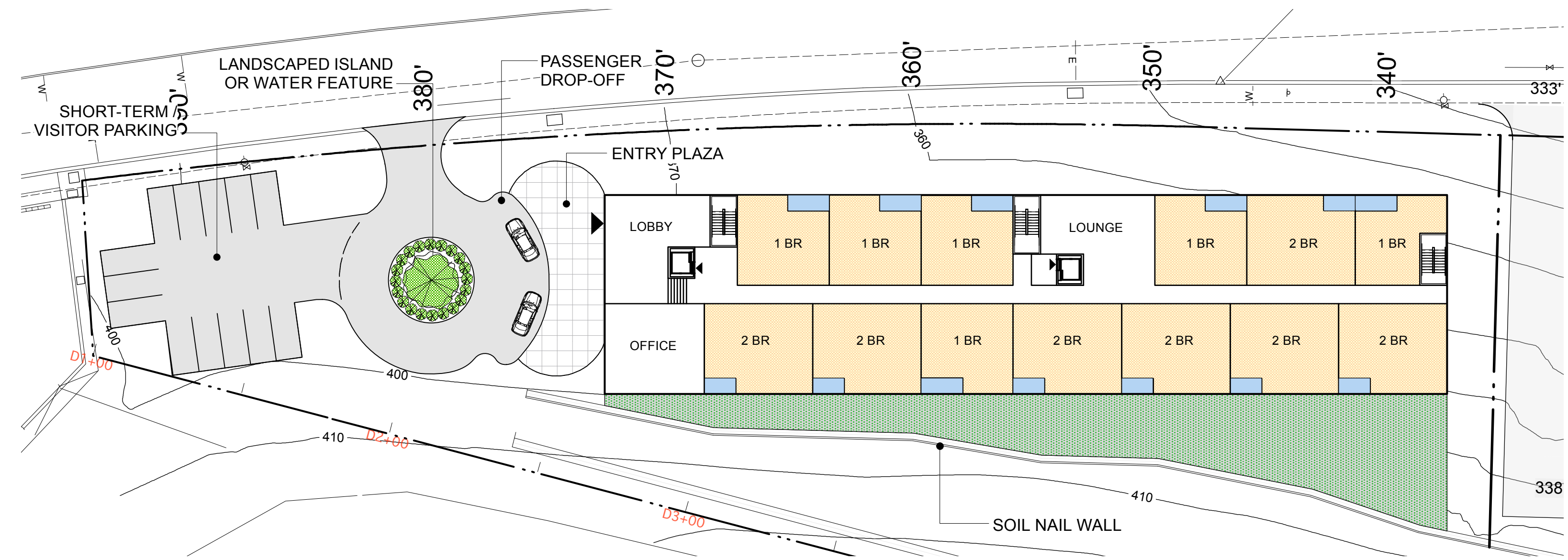


OPTION 1

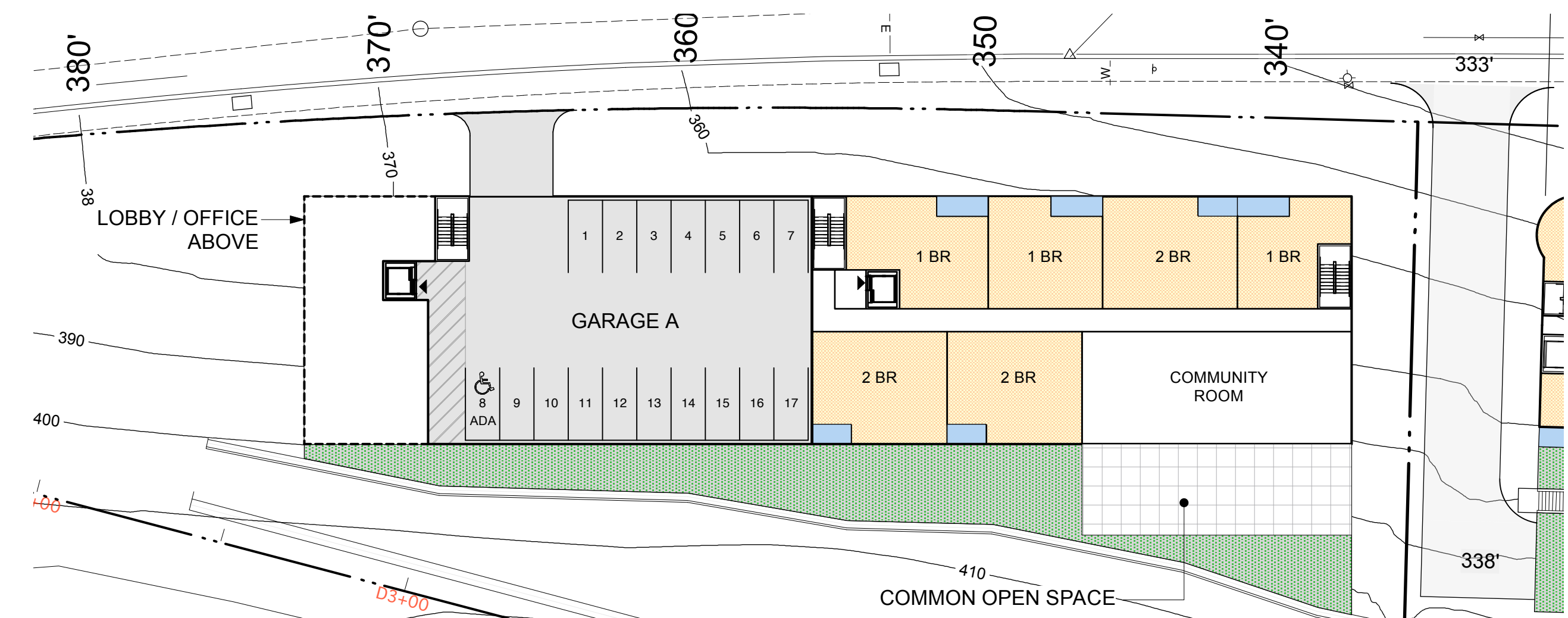
SENIOR HOUSING

- # STORIES: 7 residential o/ 1 parking
- # UNITS / DENSITY: 85 units (77 d.u. / ac.)
(120 units max. allowed)
- # PARKING SPACES: 39 (0.44 spaces / unit,
0.44 required)
- HEIGHT: 75' t.o. parapet
90' max. per PD-57
- OPEN SPACE: 15,900 s.f.
(roof deck required)

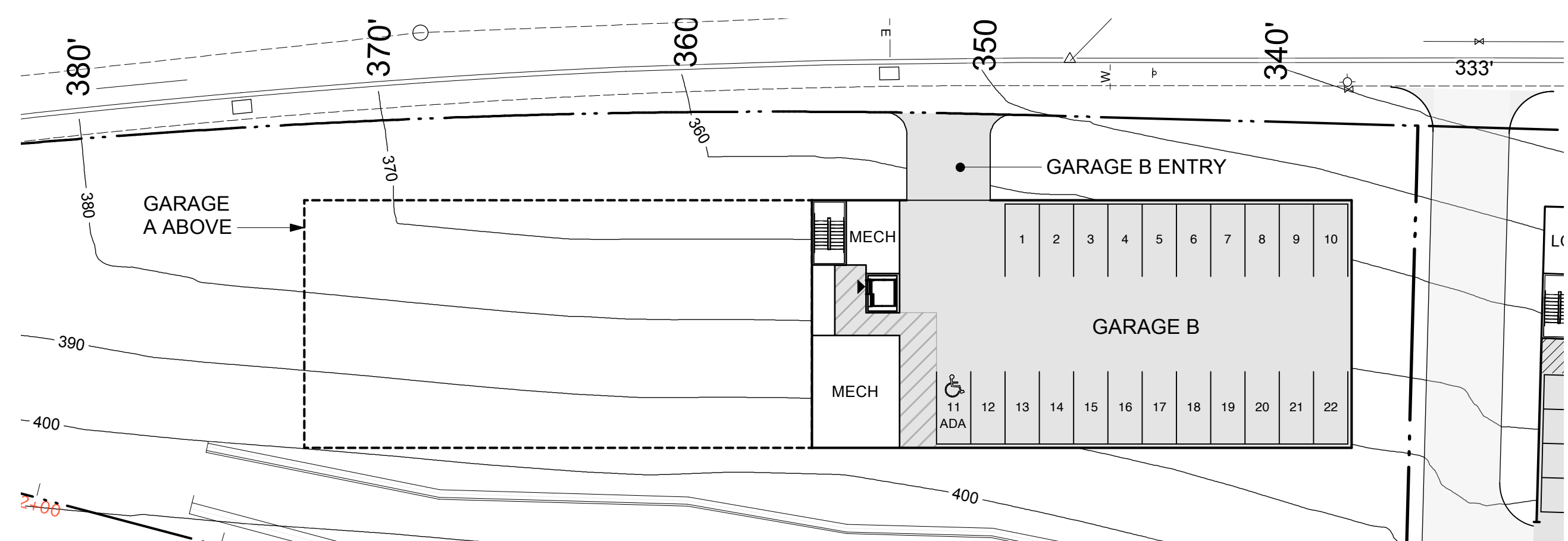
FLOOR	1 BR (740 SF)	2 BR (950 SF)	TOTAL
B1	3	3	
1	6	7	
2	8	7	
3	8	7	
4	8	7	
5	8	7	
6	4	2	
TOTALS	45	40	85 UNITS



ENTRY LEVEL 3
1" = 30'-0"



GARAGE A PARKING AND B1 RESIDENTIAL 2
1" = 30'-0"



GARAGE B PARKING 1
1" = 30'-0"

ISSUE	DATE
REVIEW	9/8/08
...	...
...	...
...	...
...	...
...	...
...	...
...	...
...	...
...	...

STAMP
ALL DRAWINGS AND WRITTEN MATERIAL
APPEARING HEREIN CONSTITUTE ORIGINAL
AND UNPUBLISHED WORK OF THE ARCHITECT
AND MAY NOT BE REPRODUCED, COPIED OR
DISCLOSED WITHOUT THE WRITTEN CONSENT
OF THE ARCHITECT.

OPTION 1

SHEET TITLE
SCALE 1" = 30'-0"
PROJECT NO. 0811 DRAWN BY GM
SHEET SIZE: 24 x 36